



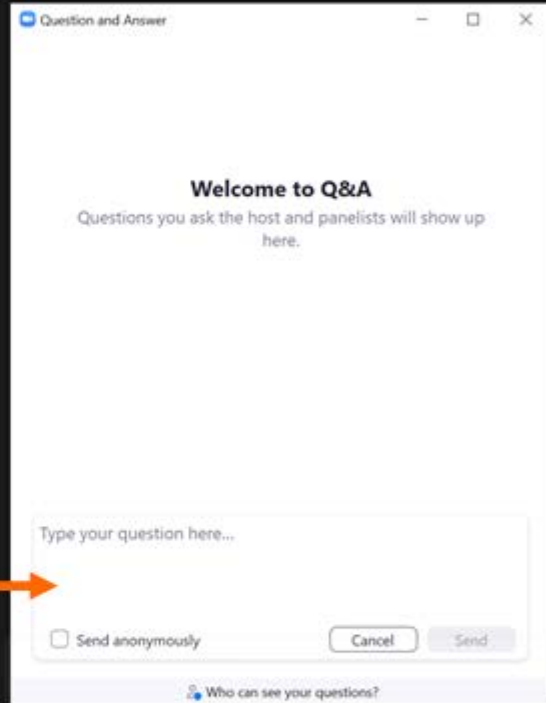
Browns Ravine Trail Change-in-Use Project

Public Meeting: January 12, 2022

Access the Q&A window

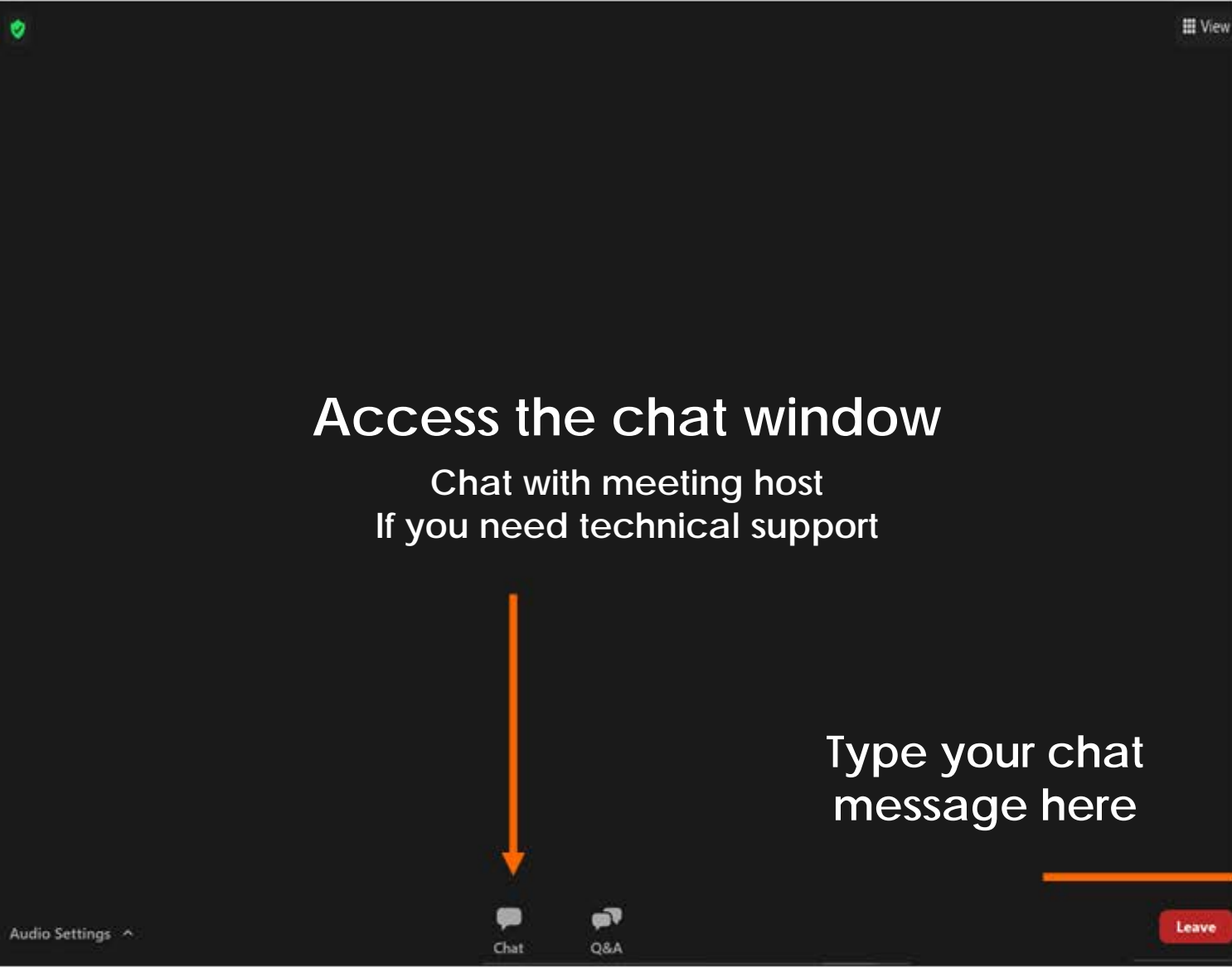
Use Q&A to ask questions throughout the meeting and during Q&A segments

Type your questions in the Q&A window and see other participants' questions as well



Zoom Webinar Controls (Computer)



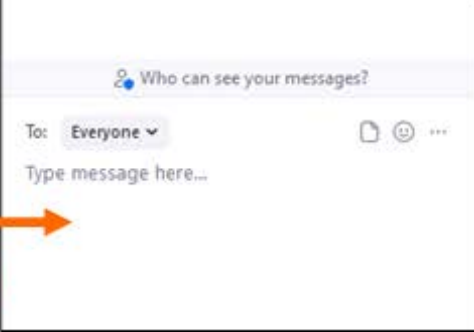


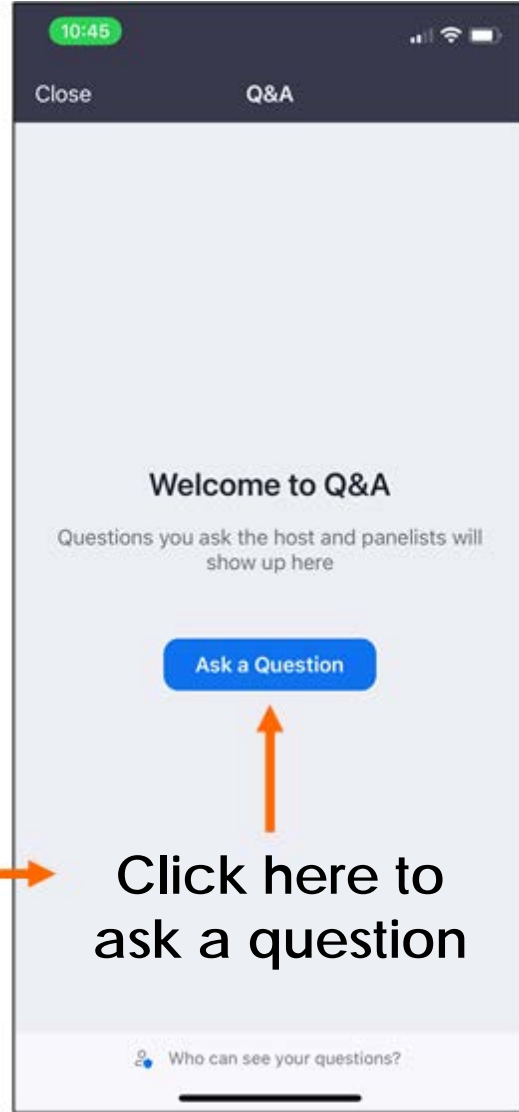
Access the chat window

Chat with meeting host
If you need technical support

Type your chat
message here

Zoom Webinar Controls (Computer)





Zoom Webinar Controls (Smart Phone)



Introductions

California State Parks - Presenters

- » **Barry Smith**, Acting District Superintendent
- » **Richard Preston-LeMay**, Folsom Sector Superintendent
- » **Jim Micheaels**, Senior Park & Recreation Specialist
- » **Jason Spann**, Associate Landscape Architect



PlaceWorks

- » **Isabelle Minn**
- » **Isby Fleischmann**
- » **Janet Chang**
- » **Ricardo Pozos**



Other State Parks Staff in Attendance

- » **Alex Stehl**, Strategic Planning Division Chief
- » **Nathan Harper**, District Maintenance Chief
- » **Devin Swartwood**, Interpreter II
- » **Steve Hilton**, Cultural Resources Program Supervisor
- » **Meghan Sullivan**, Senior Environmental Scientist
- » **Erik Taylor**, Interpreter I
- » **Noelle Breitenbach**, Associate Park & Recreation Specialist





Tell us about yourself!



Purpose of Meeting

*To share the District's **Change-in-Use (CIU)** Team's recommendation for Browns Ravine, to provide background and context for the recommendation, and to answer questions and solicit public comments on the proposed CIU.*

» Meeting Agenda

- Meeting Purpose and Project Summary
- Background and Context
- CIU Evaluation, Findings, and Recommendations
 - **Questions?**
- Proposed Trail Modifications
- Other Management Measures
 - **Questions?**
- Project Schedule
- Public comment we have heard so far
 - **Public Comment and Questions**

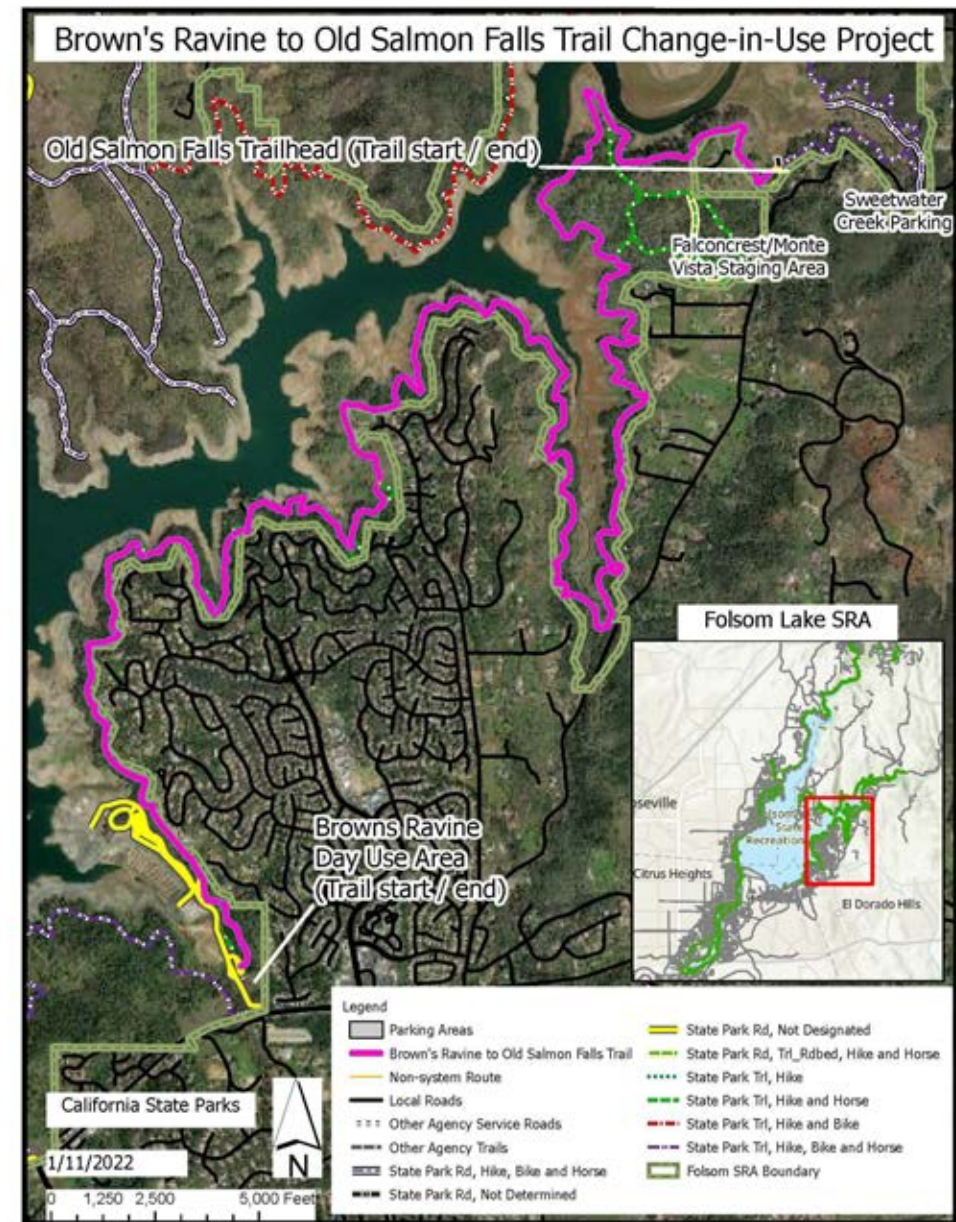
Zoom Reminders

- Use CHAT if you need technical assistance
- Use Q&A to ask questions
- We will respond to as many questions as possible.
- All questions and comments will be documented.



Project Area: Browns Ravine Trail

- » This CIU proposal includes the Browns Ravine Trail from Browns Ravine to Old Salmon Falls.
- » This proposal does not include the Monte Vista Trails, those trails to be evaluated as part of the RTMP.





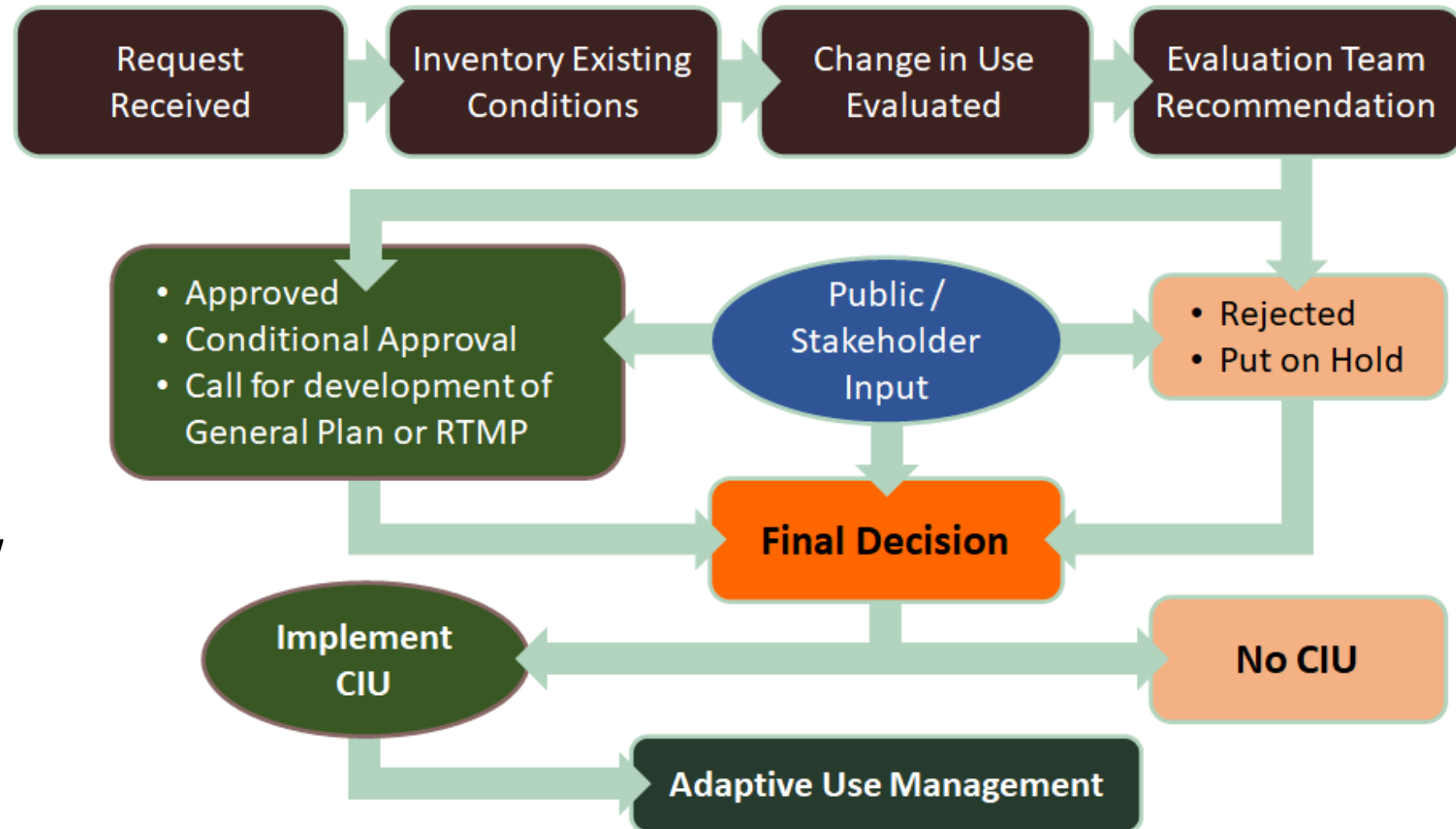
Background & Context



Change-in-Use Process

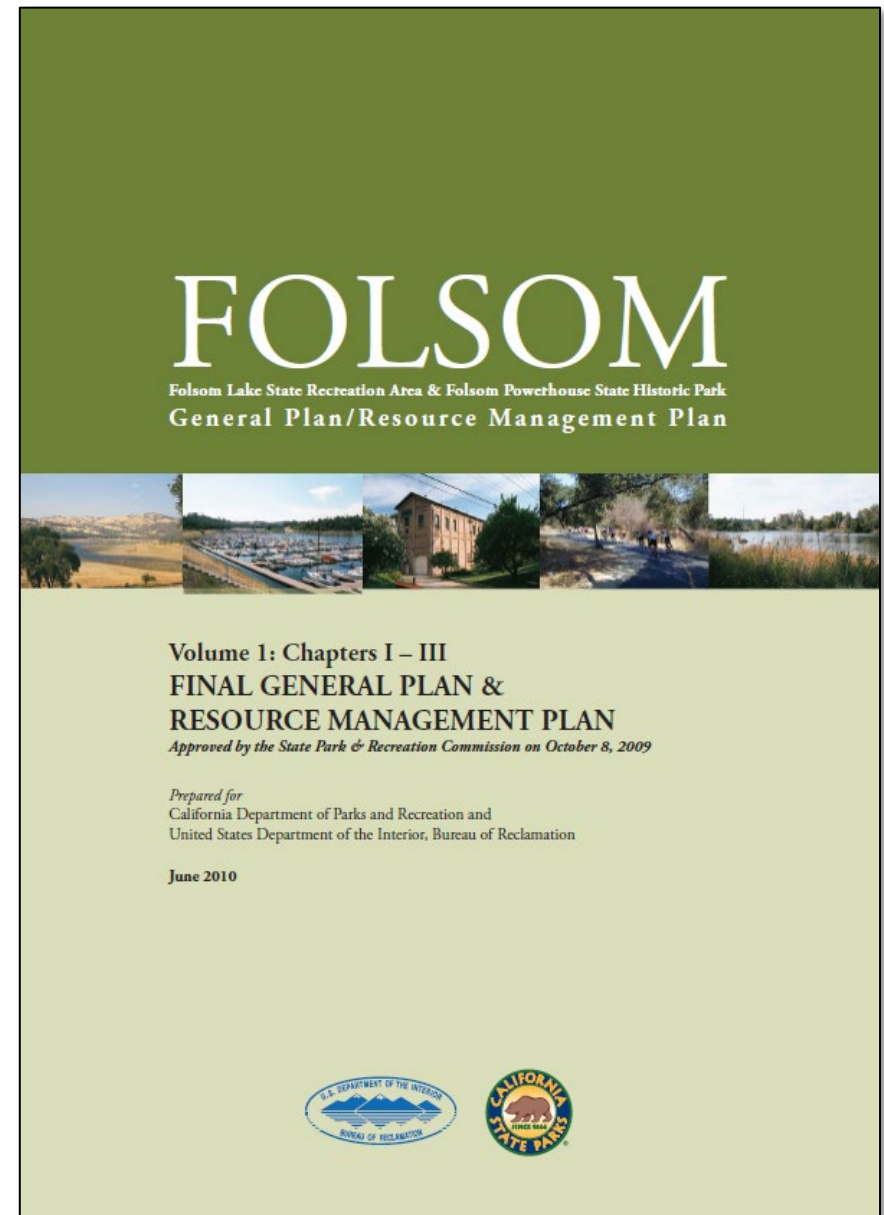
» Key Steps

- Request Received
- Evaluation
- Recommendation
- Public Input
- Decision
- Plan/Design
- Environmental Review and Permitting
- Implementation
- Adaptive Use Management (AUM)



Background/ History of CIU Evaluation of Browns Ravine Trail

- » Folsom Lake Trail Advisory Group (FTAG) Pilot Project – 2001
- » Folsom Lake SRA General Plan (2010)
- » Folsom Lake SRA Road and Trail Management Plan (underway)



Ongoing RTMP and Rationale for Stand-Alone CIU

» Why is Browns Ravine Trail CIU conducted as a stand-alone process?

- Previously assessed as individual project and recommended as a pilot project in 2001
- Favorable site conditions
 - Gentle terrain
 - Good sight lines
 - Durable soils
- Connects to multi-use trails on either end
- Logical within SRA trail system context
- A stand-alone CIU decision would allow project to move forward ahead of RTMP



The screenshot shows the California State Parks website page for the Folsom Area State Parks Road and Trail Management Plan. The page features the CA.GOV logo, the California Department of Parks and Recreation logo, and navigation links for ABOUT, VISIT A PARK, GRANTS, WHAT'S NEW, JOBS, and LEARNING. The main heading is "Folsom Area State Parks Road and Trail Management Plan". The text describes the project, mentioning the completion of the RTMP and the inclusion of both Folsom Lake State Recreation Area (SRA) and Folsom Powerhouse State Historic Park (SHP). It also mentions opportunities for public participation and environmental review. There are three images: a lake, a bridge, and a sunset. The page includes a "Related Links" section with links to Folsom Lake SRA, Folsom Powerhouse SHP, Roads and Trails Program, Change-in-Use Process, CEQA Basics, and Other RTMPs In Process. There is also a "Join Our Mailing List" section with a sign-up link and a "Contact Us" section with the email address trails@parks.ca.gov.



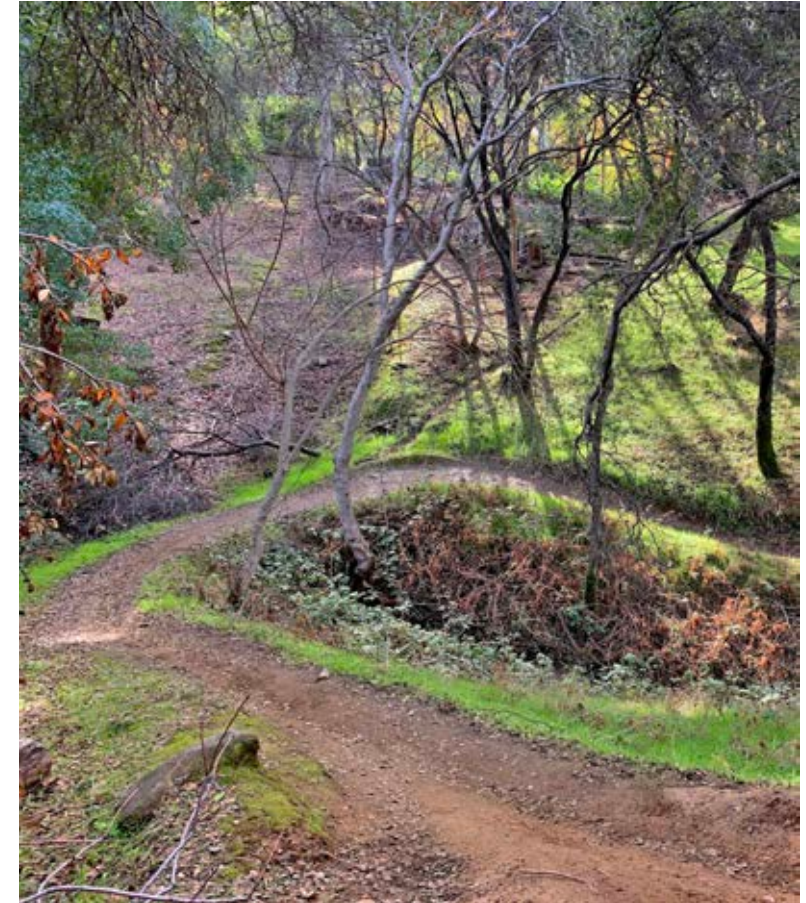
District CIU Evaluation Team (2015) and Decision-Maker

» Multidisciplinary District CIU Evaluation Team:

- Environmental Scientist
- Associate State Archeologist
- State Park Ranger
- Park & Recreation Specialist/Trails specialist
- Sr Park & Recreation Specialist/Trails Coordinator

» Browns Ravine Trail CIU Decision-Maker:

- Public input will be considered
- Gold Fields District Superintendent is decision-maker






BROWN'S RAVINE TRAIL
MILE MARKER 5.5

BROWN'S RAVINE ASSEMBLY AREA	5.5 MI
FOLSOM DAM (NO EQUESTRIAN STAGING)	3.5 MI
FOLSOM POINT (DYKE 8)	7.0 MI
NEW YORK CREEK	9.4 MI
MONTE VISTA TRAIL SOUTH	10.5 MI
MONTE VISTA TRAIL NORTH	12.0 MI
OLD SALMON FALL ASSEMBLY AREA	

Evaluation, Findings & Recommendations



Change-in-Use Evaluation Form

Trail Change-in-Use Proposal Evaluation Page 1 

Park (Including classification): _____ Evaluation _____
 Park Sub-classification: _____ Team Members _____
 Trail Name: _____
 Location in Unit: _____
 Current Use Designation(s): _____
 Proposed Use Type Change: _____
 Use Change Initiated By: _____
 Evaluation Date: _____

This worksheet is designed to help park managers make an objective, defensible, and consistent determination regarding a proposed change-in-use (CIU) for a trail in the state park system. The first section is designed to make an initial determination regarding the compatibility of the proposed CIU with the park's classification and management. Refer to the rules and regulations for the park's classification as well as approved planning documents when making this preliminary decision. If the CIU is found to be incompatible, note the rule, regulation, or planning document under which the determination to deny was made.

Preliminary Considerations		Yes	No	NA	Comments
0.1	Is the proposed CIU compatible with the park unit classification or sub-classification per the CA Public Resources Code and/or Code of Regulations?				
0.2	Is the proposed CIU on a trail that passes through more than one unit or sub-unit?				
0.3	Is there an approved general plan?				
0.4	Is there an approved road and trail management plan?				
0.5	Is there an approved area management plan?				
0.6	If there is an approved and relevant planning document, is the proposed CIU consistent with planning recommendations?				
0.7	Has a previous CIU request been made and evaluated for this trail?				
0.8	Is the proposed CIU located on a non-system (volunteer trail)? Is the proposed CIU on a facility designated as a trail or road?				
0.9	<i>This form cannot be used to consider a CIU for non-designated facilities such as a beach or desert wash.</i>				
0.10	Based on the preliminary considerations, should the CIU be further evaluated? <i>If yes, continue to the next page. If no, please explain.</i>				

If found to be compatible, the following pages aid park managers in considering the broader impacts of the proposed CIU, including necessary management or design options. Clearly identify the primary concerns and considerations for each item that significantly contributes to approval or denial of the CIU proposal.

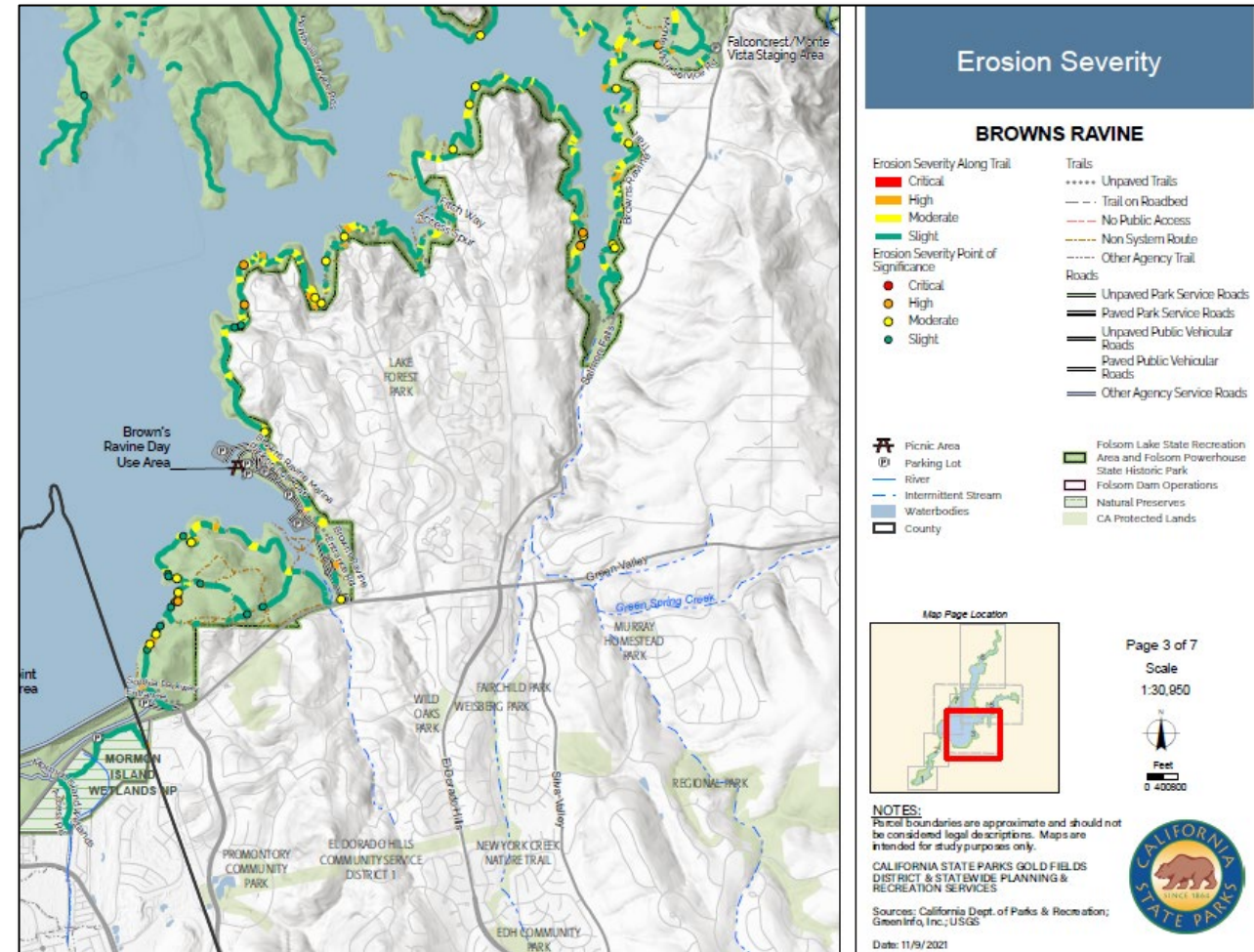
7-Point Evaluation:

1. Existing conditions
 2. Compatibility with existing visitor uses, facilities and services
 3. Circulation patterns
 4. Trail Safety
 5. Trail Sustainability
 6. Effects to Natural and Cultural Resources
 7. Effects to operation and maintenance
- + Findings & Team Recommendations



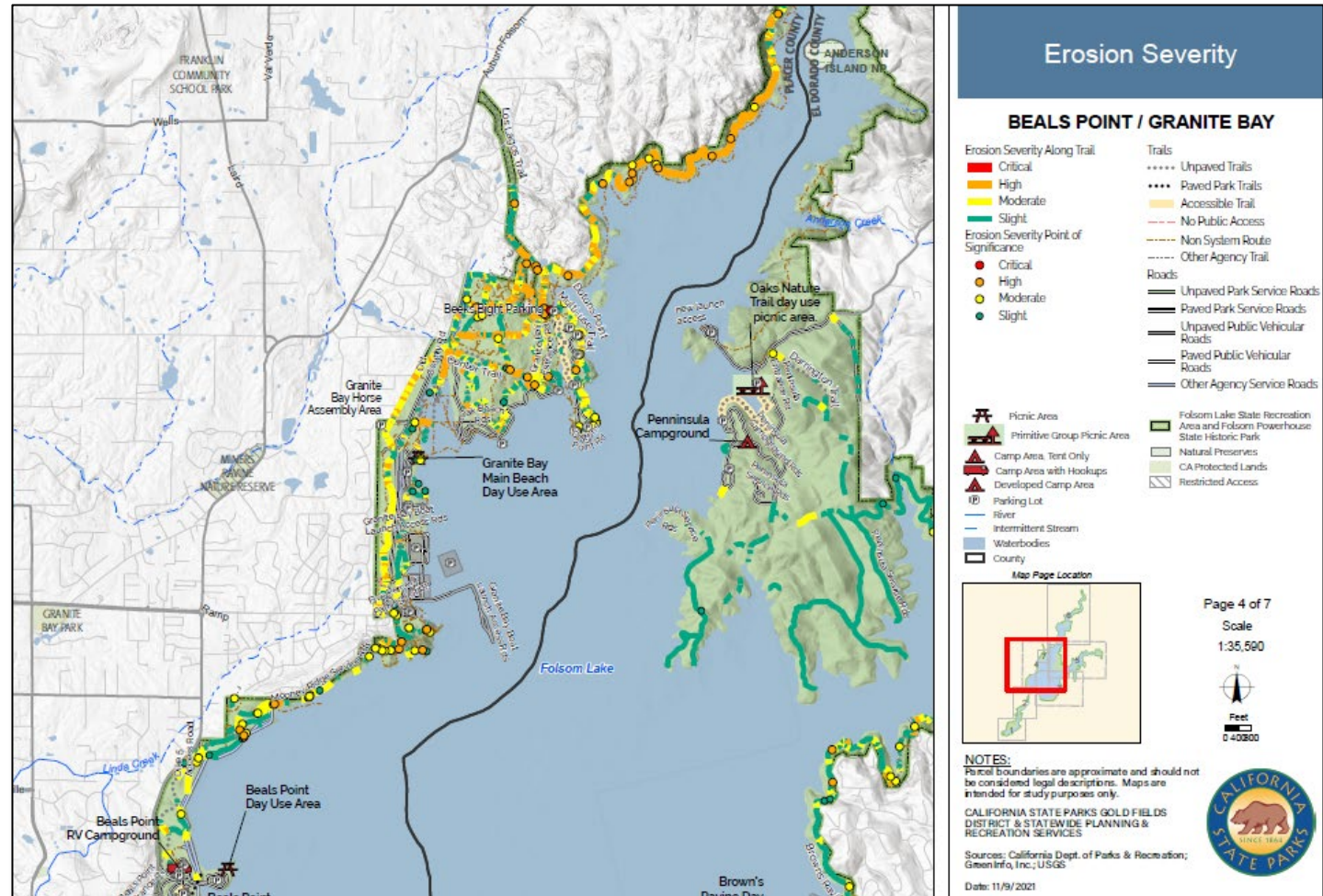
1. Existing Conditions

- » Designated for equestrian and pedestrian use.
- » Trailhead facilities at either end of trail segment: Old Salmon Falls and Browns Ravine.
- » Trail well-used, but less use than other trails within FLSRA.
- » Trail regularly used by cyclists (this is a fact, not the rationale for the CIU decision)
- » Durable soils along the trail segment.
- » Erosion Severity Map
- » Primarily slight erosion severity (green line), some moderate (yellow line).



1a. Existing Conditions

- » Comparison of erosion severity of Browns Ravine Trail to Granite Bay Area Trails.
- » Some sections of trails in the Granite Bay area have high (orange line) and moderate (yellow line) erosion severity.



2. Compatibility with Existing Uses, Facilities & Services

FINDING: Bike use on this trail would be compatible with existing visitor uses and facilities.

- » Initially, adequate parking at Browns Ravine and Old Salmon Falls.
- » Sufficient space to create additional trailhead parking and amenities at Browns Ravine as needed.
- » Could potentially create separate trailhead staging area for bike use.
- » Long history of repeated requests to allow bike use on this trail.
- » With trail modifications and management measures, don't anticipate significant levels of user conflict.

FLSRA/FPSHP

trail miles by use type:

- 7 miles of pedestrian only trails (includes ADA trails)
- 46 miles of equestrian/pedestrian trails
- 11 miles of pedestrian/bike trails
- 56 miles of unpaved multi-use trails
- 19 miles of paved multi-use trails



3. Effects to Circulation Patterns

FINDING: Implementation of the CIU will enhance circulation for cyclists.

- » **Multi-use trails (bikes permitted) on either end of the Browns Ravine Trail:**
 - Mormon Island Cove Trail
 - Sweetwater Trail.
- » **CIU would provide cyclists continuous single-track riding opportunities along the length of the South Fork Arm and connect to the Darrington and South Fork Trails.**
- » **CIU could relieve the congestion and high levels of use in the Granite Bay area.**



4. Trail Safety

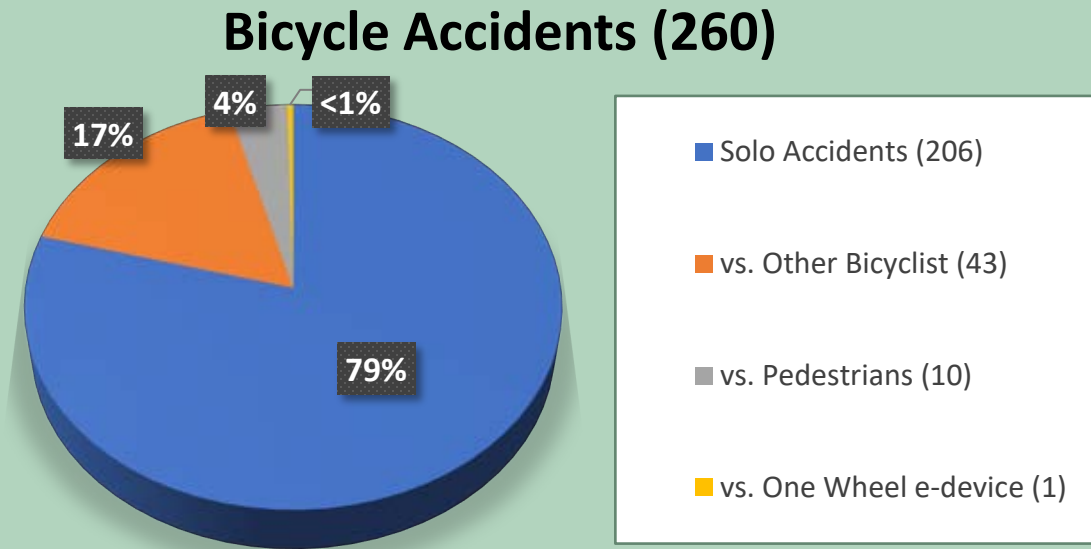
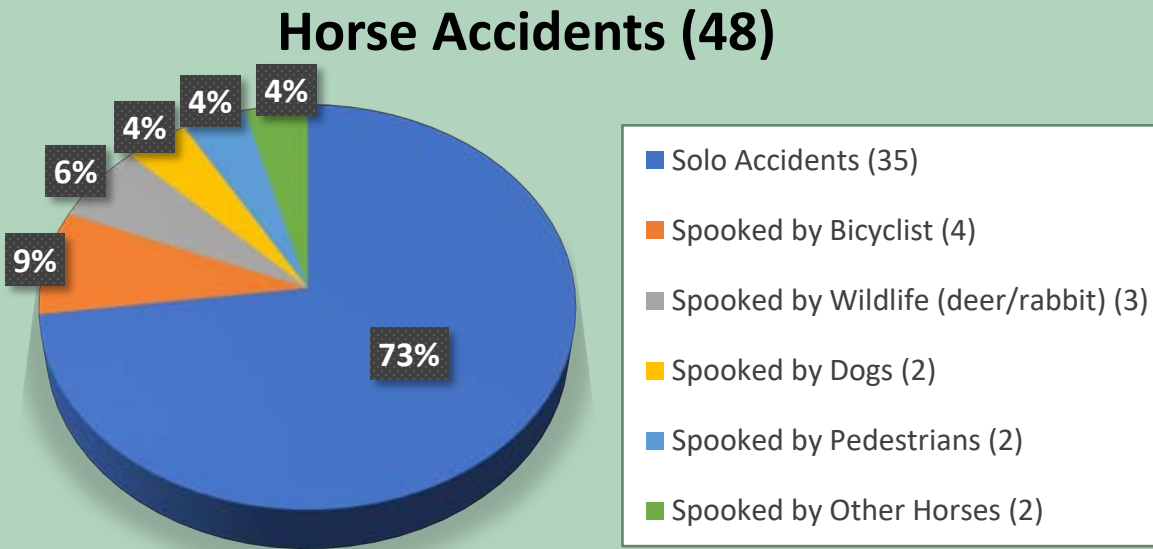
FINDING: Implementation of the CIU, with modifications, can maintain trail safety.

- » Some complaints about trail safety on this trail, but few documented safety incidents.
- » Some complaints from adjacent neighbors regarding bike use.
- » Terrain and vegetation are sufficiently open in most areas to step off trail and allow for passing.
- » In a few areas trail modifications proposed to widen trail.
- » Standard maintenance brushing is sufficient to provide adequate sight lines in most areas.
- » Rocky textured sections of trail to be left to slow bike speeds.
- » Trail patrols, trail etiquette and safety signing, interpretive and education efforts and messaging.



4a. Trail Safety

Public Safety Trail Accident Records at FLSRA over the past 10 years.



There were 5 Accident Records on the Brown's Ravine Trail in the past 10 years:

- Three solo bike accidents
- One horse v. pedestrian accident
- One solo horse accident



5. Trail Sustainability

FINDING: With modifications the trail will be sustainable after implementing the CIU.

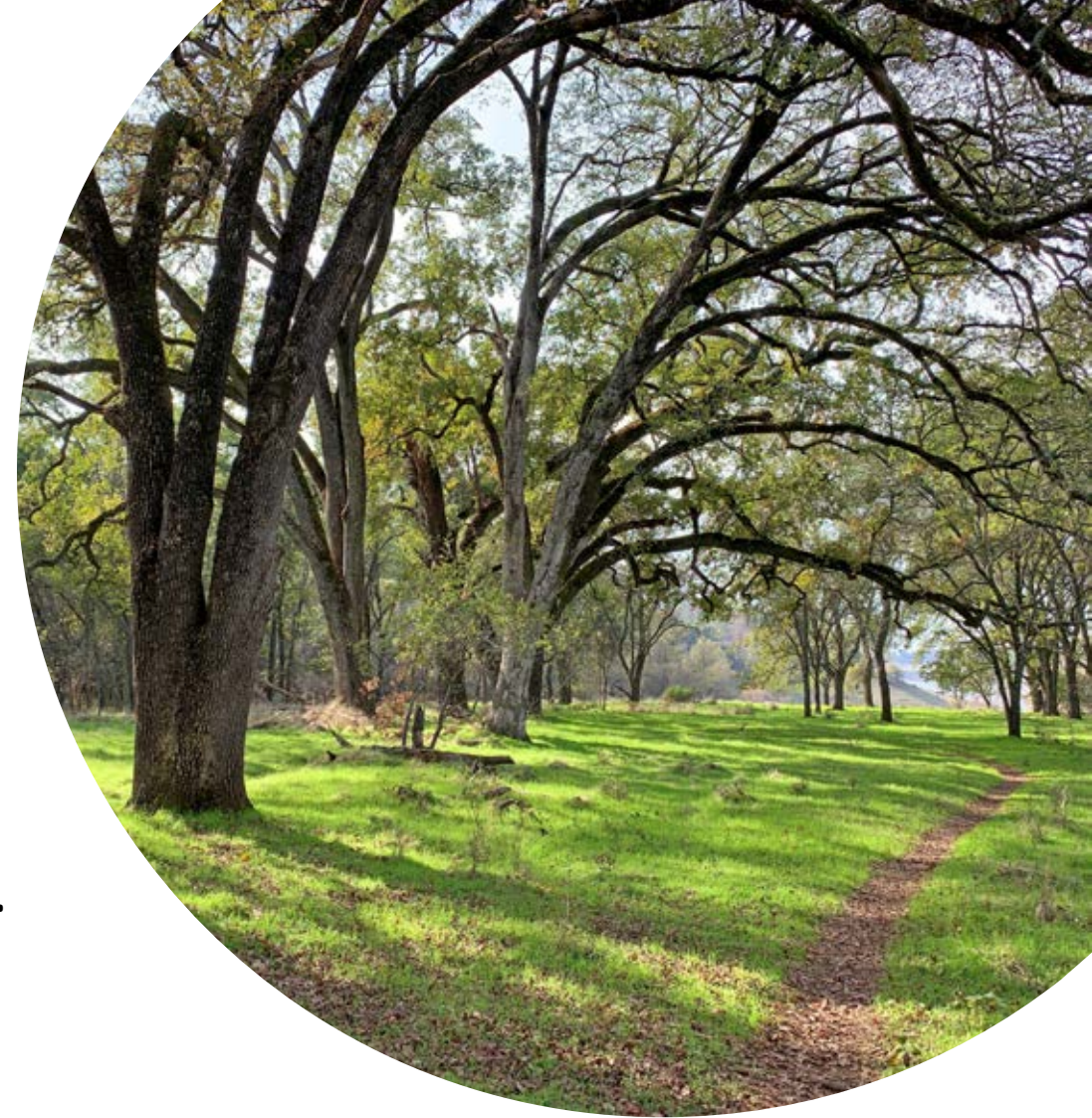
- » There are a few steep sections into/out of drainages.
- » The soils along the trail are very durable. Clay and rock content in soils provides durable surface.
- » Minor entrenchment, rills and ruts along the trail in places, but not severe entrenchment.
- » The trail is currently generally sustainable.
- » Proposed modifications include re-routes, causeway, armored crossings, trail bridges, etc.
- » Currently no wet weather closures for FLSRA trails, this may be an idea considered in the RTMP.
- » Trail is aligned generally along gentle terrain.



6. Effects on Natural and Cultural Resources

FINDING: With trail modifications and using the standard project conditions, the CIU will not significantly impact natural or cultural resources.

- » There are historic mining and cultural features along the trail.
- » Elderberry along the trail, host plant of the federally protected valley elderberry longhorn beetle (VELB)
- » Rookery site (heron and egret) and large Valley Oaks along trail.
- » Utilizing the standard project conditions and best management practices will help avoid significant impacts to resources.
- » Permits will be needed to implement the trail modifications.
- » Trail modifications will address trail alignment through existing wetland areas.



7. Effects on Trail Operations and Maintenance

FINDING: Implementing the CIU will not significantly increase operation and maintenance workload.

- » Additional proposed trail structures will require additional maintenance but will protect resources in the long run.
- » Regular trail maintenance can be performed by revitalized GFD trail crew.
- » Substantial interest from volunteers in assisting with trail maintenance.
- » Additional trail patrols, trail etiquette and safety signing, interpretive and education efforts and messaging will not be a significant burden.



District CIU Team Recommendation

- » Approve the Change-in-Use, with trail modifications, adding bikes as an allowed use on the Browns Ravine Trail from Browns Ravine to Old Salmon Falls.



Questions about Evaluation or Findings?





Proposed Trail Modifications & Management Measures

Proposed Trail Modifications

- » **Rationale for modifications is what physical changes to trail are needed for trail sustainability and trail safety.**
- » **Trail modifications include:** reroutes into/out of drainages, bridges/armored crossings, eliminating unsustainable parallel trails, reconstruction of sections of trail, drainage dips and boardwalk/causeway/drain lens.
- » **Routine maintenance to be performed of entire trail:** brushing, remove slough and berm on tread.



Trail Modifications

» High Priority Modifications

- Protect a water course, wetland area or provide for trail safety
- Repair/replacement of drainage structures, reroutes near drainages, trail bridge, causeways or puncheons across wet areas.
- Removal of unsustainable parallel trails
- Brushing, other sight line improvements
- Must be completed prior to implementing CIU

» Medium Priority Modifications

- Not directly connected to water course.
- Includes drain dips, trail reconstruction, etc
- Must be completed within 3-5 years of implementing CIU.



Trail Modifications

- » Some endurance riding/technical challenge features to be left.
- » This includes segments of trail that are steeper, rocky or with uneven tread that are not an erosion or safety problem.
- » Retaining these sections will help slow bikes.



Trail Modification Maps

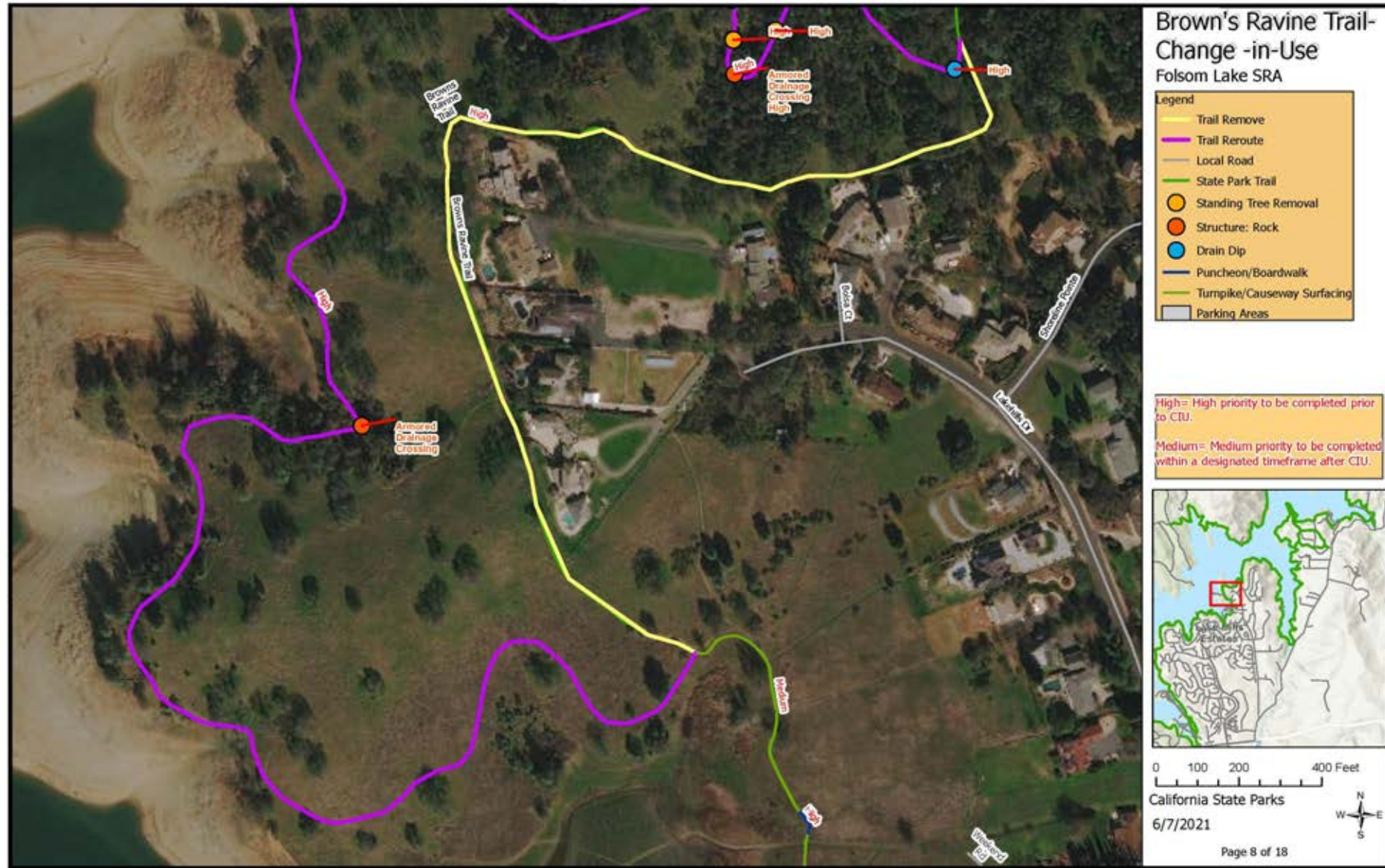
- » Proposed trail modifications are identified on a series of 18 maps available on project webpage
- » Public can review and comment on proposed trail modifications



Trail Modification Examples – Map #8

» Key Modifications

- Long reroute away from houses
- Causeway or puncheon across wet areas



Trail Modification Examples – Map #17

» Key Modifications

- Widen trail tread
- Additional Brushing



Other Management Measures

- » Trail etiquette/trail safety signs and messaging
- » Trail patrols - State Parks staff and volunteers
- » Social media messaging
- » Pop-up events and trail roving by interpretive staff
- » Encourage bikers to use sound-making devices
- » 1-yr moratorium on new special events on trail, re-assess after 1 year of CIU.
- » Ongoing monitoring of trail conditions, user conflicts and safety incidents. Adaptive management as appropriate.



Questions about trail modifications or management measures?



A scenic view of a pine forest. In the foreground, a large, textured tree trunk stands prominently. The ground is covered with green grass and a layer of brown pine needles. In the background, a dense forest of pine trees stretches across a valley, with a range of mountains visible under a cloudy sky. The overall atmosphere is natural and serene.

Project Schedule

Project Schedule

» Browns Ravine Trail Change-In-Use (CIU) Project Schedule

Action Item	Date	Status
Browns Ravine Trail Change-In-Use (CIU) Request	2014	Complete
District CIU Team Field Evaluation and Recommendation	2015 – 2021	Complete
Trail Modification Mapping	2021	Complete
Final CIU Decision	2022	Pending
Trail Modification Environmental Review and Permitting	2022 - 2023	Pending
Implementation of Trail Modifications	2022 - 2024	Pending



Questions and Comments



Input Received from Public

Parks has received a substantial number of emails both in support and opposed. Our consideration of public comments is not a matter of counting “votes”.

Oppose

- » Opening trail to bikes will lead to additional unauthorized trail development and resource damage.
- » Speed and lack of etiquette of some bikes will make trail unsafe for other users.
- » State Parks has not enforced trail rules in the past, not likely to do so in future.
- » Trail condition is not consistent with multi-use (narrow, blind corners)
- » Bikes will change experience, need trail opportunities for pedestrians/equestrians without bikes.

Support

- » Bike use has grown tremendously and continues to do so, need more biking opportunities.
- » Implementing CIU will provide needed connections to other multi-use and bike trails.
- » Trail conditions are suitable for multi-use: gentle grades, good sight lines, durable soils.
- » Open trail to bikes prior to completing all modifications, use volunteers to assist with trail work.



Share your thoughts! Questions and Comments.

- Use [Zoom Q&A](#) to ask questions/share comments
- We will respond to as many questions as possible.
- All questions and comments will be documented.
- Contact trails@parks.ca.gov if you have further questions/comments by [January 31](#).





Thank You

Send questions/comments *by January 31st* to: trails@parks.ca.gov

Learn more at: <https://www.parks.ca.gov/BrownsRavineTrailCIU>

Folsom Area State Parks Road and Trail Management Plan:
<https://www.parks.ca.gov/FolsomSRA-RTMP>